

Inflatable movie screen storage precautions

1. The fan avoid strong extrusion as much as possible
2. Pay attention to ventilation
3. Pay attention to fire prevention
3. Pay attention to moisture, please avoid storing in dark and humid places as much as possible,

Tips: If you have any questions about the product, please contact us to solve the problem . We will do our best to serve you!

Thank you for your purchase, hope to see you again!



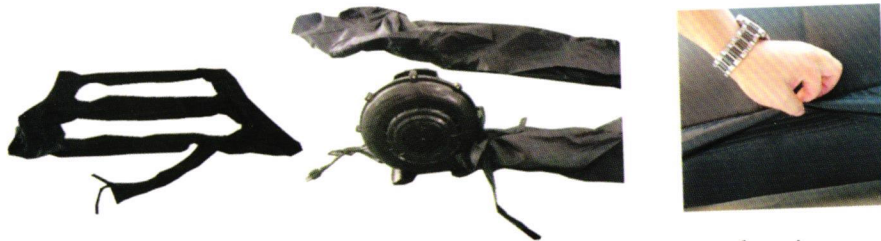
Inflatable Movie Screen

Instruction Manual

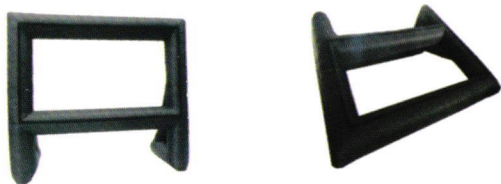
1: Open the box and take out the screen frame.



2: Spread the movie screen frame and find the fan connection port to the screen frame then connect the fan to it. Find the exhaust vent under the movie screen frame and close the zipper before use fan to inflate



3: The fan connected to the screen and make it expand, after screen frame starting to inflate then let the frame is tilted backwards.



4: Open the projection cloth and lay it on the frame, first attach it to the top of the frame and then stick it to the bottom.



5: After affixing the projection cloth, set it up and then fix the rope of the link frame.

