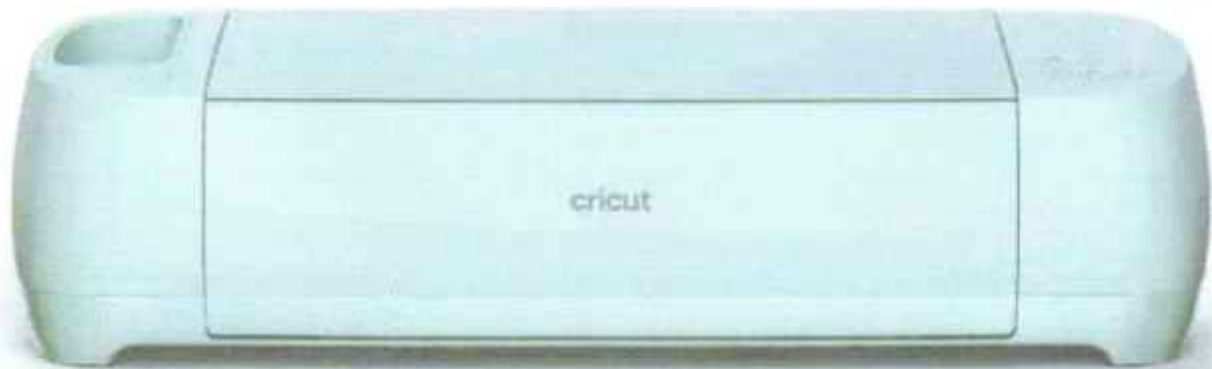


cricut explore.3



User Guide
Manuel de l'utilisateur
Manual de usuario
Bedienungsanleitung

Manuale per l'utente
Manual do usuário
Gebruikershandleiding
Brugermanual

Bruksanvisning
Käyttöohje
Brukerveiledning

Included

- Cricut Explore™ 3 machine
- Premium Fine-Point Blade + Housing
- Welcome Card
- Power adapter
- USB cable
- Free trial subscription to Cricut Access™ (for new subscribers)
- 100 ready-to-make projects online
- Material for a practice cut

Get started with Design Space™

Your creative journey starts with Design Space, a free, easy-to-learn design app for Cricut smart cutting machines. Here, you can browse thousands of images, projects, and fonts in the Cricut Library. Or design your own project from scratch.

Because it's cloud-based, you can start a design on your computer and finish it on your mobile device. To design without an internet connection, just download your favorite fonts and projects for offline use.

Download Design Space at cricut.com/setup

Cricut Access™

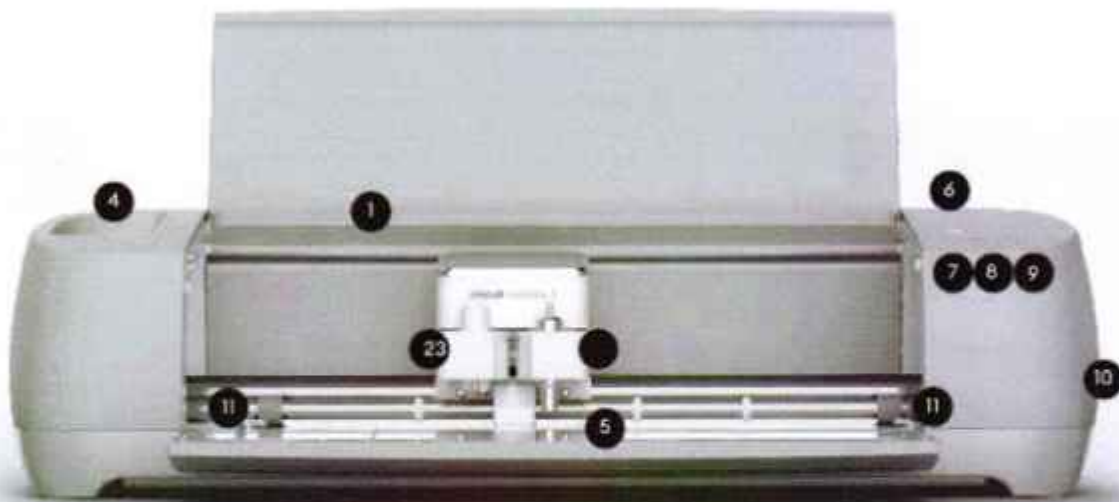
With a Cricut Access subscription, in addition to the free images included in Design Space, you'll have access to an ever-growing library of images, fonts, and projects. Your first month is free! Learn more at cricut.com/access.



Machine overview

- | | | |
|---------------------------|-----------------------|---------------------|
| 1. Slot for mobile device | 5. Storage | 9. Pause button |
| 2. Clamp A | 6. Power button | 10. USB port |
| 3. Clamp B | 7. Load/Unload button | 11. Material guides |
| 4. Storage cup | 8. Go button | |

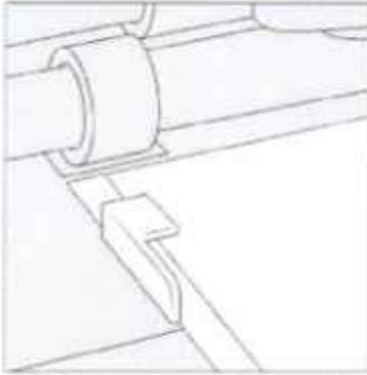
23



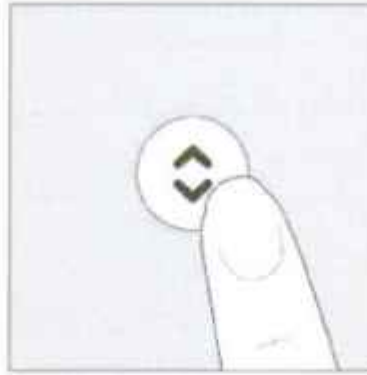
For more info, see cricut.com/more



Load Smart Materials™



1. Position material under material guides.

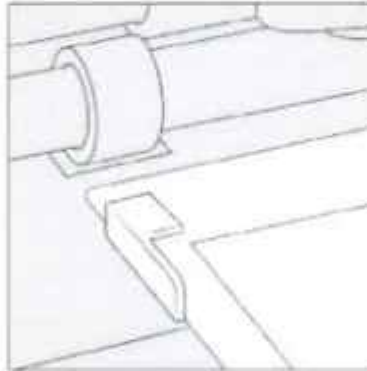


2. Hold against rollers as you press the flashing Load/Unload button.

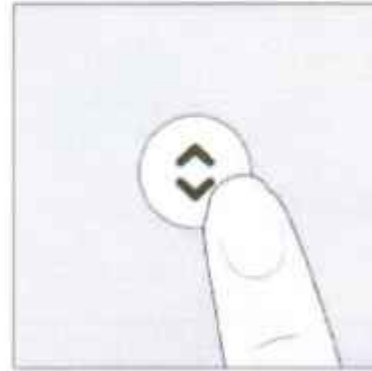
Load machine mat with material



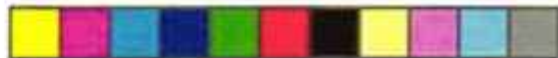
1. Remove plastic cover, then align material onto mat. For fabric, use brayer to smooth down.



2. When prompted, insert mat under material guides.

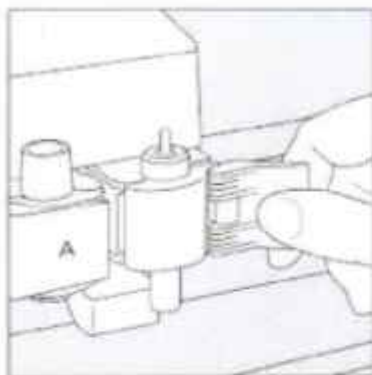


3. Hold mat against rollers as you press flashing Load/Unload button.

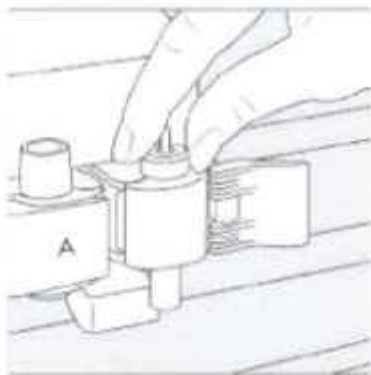


Change tool

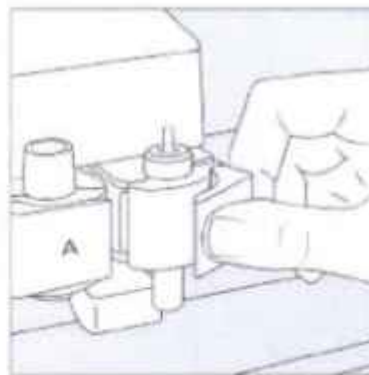
EN



1. Open Clamp B, and remove tool housing.



2. Firmly seat new tool. 3. Close clamp,



housing.

Use caution, and follow instructions when replacing blade.
For instructions, see blade packaging or help.cricut.com/blades

For more info, see cricut.com/more

