



BLAVOR PN-W05 Qi Solar Power Bank User Guide

[Home](#) » [BLAVOR](#) » [BLAVOR PN-W05 Qi Solar Power Bank User Guide](#) 

Contents

- [1 BLAVOR PN-W05 Qi Solar Power Bank](#)
- [2 Important safety instructions](#)
- [3 Special Attention](#)
- [4 Legal and Regulatory Compliance](#)
- [5 Product Parameters](#)
- [6 PACKAGE CONTENTS](#)
- [7 Product Details](#)
- [8 HOW TO USE](#)
- [9 PRODUCT MAINTENANCE](#)
- [10 QUALITY WARRANTY](#)
- [11 FCC Statement](#)
- [12 Documents / Resources](#)
- [13 Related Posts](#)

The BLAVOR logo, consisting of the word 'BLAVOR' in white, bold, sans-serif capital letters, set against a teal rectangular background.

BLAVOR PN-W05 Qi Solar Power Bank



Important safety instructions

Warning: When using this product, basic precautions should always be followed, including the following:

- Carefully read the User Manual before using the power bank.
- Close supervision is needed when the power bank is used near children.
- Do not strike, hit or insert any foreign objects into the power bank or any of its ports.
- Do not expose the power bank to heavy rain/snow to avoid malfunction.
- Do not immerge the power bank into water to avoid malfunction.
- Do not disassemble or reassemble the power bank without authorization from manufacturer
- Do not use the power bank if it has been damaged or modified. If you see any bulging, swelling, leakage or other abnormality from the power bank, stop using it immediately.

Special Attention

1. The suggested working/storage temperature is between -4°F and +140°F (-20°C+60°C).
2. Do not expose a power bank to fire or extreme high temperature. Exposure to fire or temperature above 176°F /80°C may cause battery swelling up or explosion.
3. Do not leave the power bank on the car dashboard without supervision. Under hot weather, the temperature inside a parked car can reach above 176°F /80°C, where the battery may swell up or explode.
4. Do not leave the power bank on the flat surface of concrete, metal and wooden floor to have the battery being solar charged. Under strong sunlight, the surface temperature of concrete, metal and wooden floor may reach

above 176°F /80°C, where the battery may swell up or explode.

5. For solar panel charging, we recommend that you hang the power bank in a ventilated environment for solar charging to avoid swell up of the battery due to extrem high temperature.

Legal and Regulatory Compliance

All BLAVOR power banks have undergone extensive tests and the strict quality control procedure. Both our factory and products are tested and certified.

1. ISO 9001:Quality management system that demonstrateits our ability to consistently provide products and services that meet customer and applicable statutory and regulatory requirements.
2. UN38.3 Test Certificate:This ensures that the battery cell used in the power bank adheres to safety standards for things like maximum continuous charge voltage, cut off voltage, cell numbers, nominal voltage, discharge etc.
3. MSDS Certificate:This is the Material Safty Data Sheet, all our power banks come with MSDS sheets, these sheets outline the hazardousness material with batteries, handling procedures, precautions etc.
4. UL 2056 Test Certifiacte:A safety standards proves that the products has been gone through a series of in-depth evaluations by UL expert engineers.
5. CE Certifiactae:All our power banks are certified with CE certificates to ensure they comply with regulations for sale in Europe Market.

Product Parameters

- **Product Name:** Wireless Solar Power bank
- **Micro USB Input:** DC 5V 2.1A
- **Type C Input:** DC 5V 2.1A
- **USB Output:** DC 5V 2.1A
- **Wireless Output:** DC5V 1.0A
- **Battery Capacity:** 10,000mah
- **Battery Type:** Polymer Lithium Battery
- **Qi Compatible Devices:** All Qi-Enabled Devices
- **Waterproof Rating:** IPX4 (Splash Proof)
- **Product Size:** 5.9*3.1*0.8in
- **Product Weight:** 9.602

PACKAGE CONTENTS

- 1*Solar Power Bank
- 1* 2A 11.8in Cable
- 1*User Manual
- 1*Compass Ring

Product Details



1. **Wireless charging indicator**

Press the “power button”, then the “wireless charging indicator” and “battery power indicator” is going to turn on, if no Qi-enabled devices get close to the qi wireless charging area within 20cm, it will be off.

2. **Power button**

Press the “power button”, then the function of wireless charging and cable output charging turns on.

3. **Wireless charging area**

The wireless charging feature only suit for qi-enabled devices, pls figure out whether your phone is Qi-enabled before charging it.

4. **Anti-slip rubber mat**

A circle of premium anti-slip rubber mat is designed for preventing your phone from falling off.

5. **Dual led flashlight**

Press the power button for at least 5 seconds to turn on/off the flashlights.

6. **Type C input**

DC 5V 2.1A type C port is a new tech designed for future use.

7. **Usb output:** DC 5V 2.1A,

8. **Micro usb input:** DC 5V 2.1A,

9. **Solar charging indicator**

Color-green, When the sunlight intensity is above 25,000lux and the solar panel are fully exposed to the sunlight, so the solar charger can charge itself with max 180ma current.

10. **Battery power indicator**

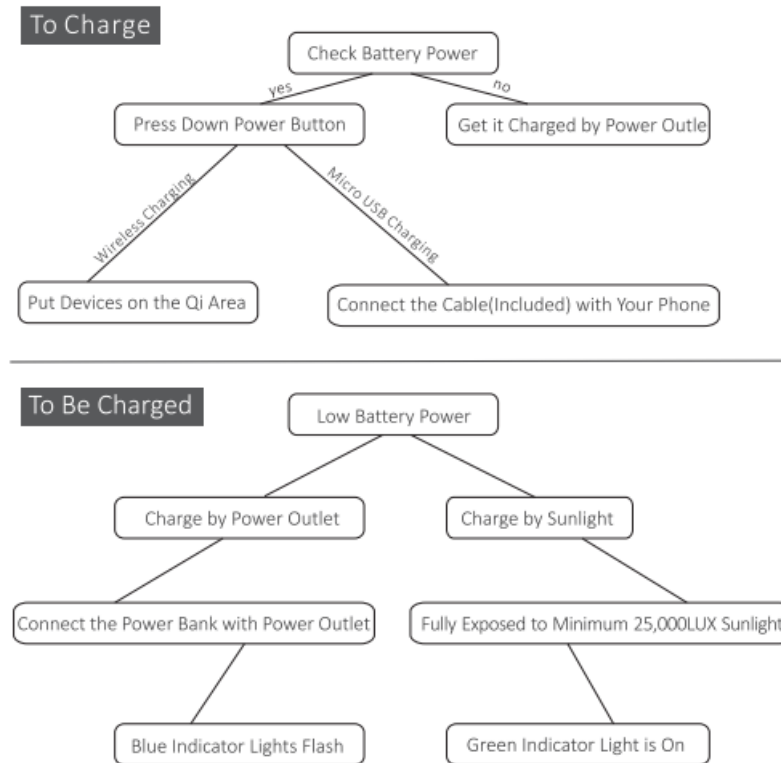
Color-blue, press the “power button”, the indicator is going to turn on. Four lights from left to right represent 25%/50%/75%/100% power capacity, When you charge the power bank by micro USB port, all the indicator lights flash in sequence till it's fully charged.

11. Sunlight receiving panel

Minimum sunlight intensity 25,000LUX, 180ma charging currency

HOW TO USE

NOTE: Its advised to take the solar charging feature as the emergency back-up solution instead of main power sources due to sunlight Make sure that your power bank is fully charged by power outlet before starting your long journey.



PRODUCT MAINTENANCE

- For longer battery life span, make sure its completely out of power capacity before charging it.
- If you are not using the device for a long time, charge it by power outlet at least every six months.
- Do not use wireless charging function while charging the power bank.

IMPORTANT NOTICE

- The product is suit for 5V/2V devices, or it will be in protection status and won't work.
- Keep it away from wet environment and corrosive substances.
- Do not try to refit, disassemble it.

QUALITY WARRANTY

All products sold by BLAVOR enjoy 12 months warranty, the guarantee period begins from the date you purchase it. During the period if there are any problems , which is verified by our engineer team as not being damaged by man-made factors, BLAVOR is responsible for it and our team will be with you until its solved.

CUSTOMER SERVICE

BLAVOR offers timely and considerable customer services, if there are any problems, feel free to contact us, we will get back to you within 12hours.

We'd love to get some feedbacks from you, so it could help us improve our products and customer services.

Thank you for choosing BLAVOR

CON TACT US

Support@blavor.com



FCC Statement

This equipment has been tested and found to comply with the limits for a Class B digital device, pursuant to Part 15 of the FCC Rules. These limits are designed to provide reasonable protection against harmful interference in a residential installation. This equipment generates uses and can radiate radio frequency energy and, if not installed and used in accordance with the instructions, may cause harmful interference to radio communications. However, there is no guarantee that interference will not occur in a particular installation. If this equipment does cause harmful interference to radio or television reception, which can be determined by turning the equipment off and on, the user is encouraged to try to correct the interference by one or more of the following measures:

- Reorient or relocate the receiving antenna.
- Increase the separation between the equipment and receiver.
- Connect the equipment into an outlet on a circuit different from that to which the receiver is connected.
- Consult the dealer or an experienced radio/TV technician for help.

This device complies with part 15 of the FCC Rules. Operation is subject to the following two conditions:(1) This device may not cause harmful interference, and (2) this device must accept any interference received, including interference that may cause undesired operation. Changes or modifications not expressly approved by the party responsible for compliance could void the user's authority to operate the equipment.

Documents / Resources

	BLAVOR PN-W05 Qi Solar Power Bank [pdf] User Guide PN-W05, PNW05, 2A4LH-PN-W05, 2A4LHPNW05, PN-W05 Qi, Solar Power Bank, PN-W05, Qi Solar Power Bank, Power Bank
	BLAVOR PN-W05 Qi Solar Power Bank [pdf] User Manual PN-W05 Qi Solar Power Bank, PN-W05, PN-W05 Solar Power Bank, Qi Solar Power Bank, Sol ar Power Bank, Power Bank, Qi Power Bank, PN-W05 Power Bank